



- POTENTIAL MITIGATION MEASURES
CONSTRUCTION PHASE:**
- CM1 (L+V) - WORKS AREA MINIMISED
 - CM2 (V) - CONSTRUCTION PERIOD REDUCED TO PRACTICAL MINIMUM
 - CM3 (V) - PHASING OF THE CONSTRUCTION STAGE
 - CM4 (V) - CONSTRUCTION TRAFFIC (LAND AND SEA) REDUCED TO PRACTICAL MINIMUM
 - CM5 (V) - ERECTION OF DECORATIVE MESH SCREENS OR CONSTRUCTION HOARDINGS
 - CM6 (V) - AVOIDANCE OF EXCESSIVE HEIGHT AND BULK OF SITE BUILDINGS AND STRUCTURES
 - CM7 (V) - CONTROL OF NIGHT-TIME LIGHTING
 - CM8 (L) - PROTECT EXISTING TREES
 - CM9 (L) - TREES AFFECTED BY THE WORKS SHALL BE TRANSPLANTED
 - CM10 (L+V) - ADVANCED HYDROSEEDING AROUND TAXIWAYS AND RUNWAYS

- POTENTIAL MITIGATION MEASURES
OPERATIONAL PHASE:**
- OM1 (V) - SENSITIVE LANDSCAPE DESIGN OF RECLAMATION EDGE
 - OM2 (V) - ALL ABOVE GROUND STRUCTURES SHALL BE SENSITIVELY DESIGNED
 - OM3 (V) - SENSITIVE DESIGN OF BUILDINGS AND STRUCTURES IN TERMS OF SCALE, HEIGHT AND BULK (VISUAL WEIGHT)
 - OM4 (V) - USE APPROPRIATE BUILDING MATERIALS AND COLOURS IN BUILT STRUCTURES
 - OM5 (V) - LIGHTING UNITS TO BE DIRECTIONAL AND MINIMISE UNNECESSARY LIGHT SPILL AND GLARE
 - OM6 (L+V) - GREENING MEASURES IMPLEMENTED
 - OM7 (L+V) - COMPENSATORY TREE PLANTING FOR ALL FELLED TREES
 - OM8 (L+V) - STREETSCAPE SHALL BE SENSITIVELY DESIGNED
 - OM9 (L+V) - ALL STREETSCAPE AREAS AND HARD AND SOFT LANDSCAPE AREAS DISTURBED DURING CONSTRUCTION SHALL BE REINSTATED
 - OM10 (V) - AESTHETIC IMPROVEMENT PLANTING OF VIADUCT STRUCTURE THROUGH GREENING OF STRUCTURE WHERE FEASIBLE
 - OM11 (V) - SENSITIVE DESIGN OF FOOTBRIDGES, NOISE BARRIERS AND ENCLOSURES WITH GREENING (SCREEN PLANTING/CLIMBERS/PLANTERS) AND CHROMATIC MEASURES

LEGEND:

- CM10, OM6
- OM2, OM3, OM4, OM6
- OM6, OM8, OM9
- OM6, OM10
- OM1, OM6

NOTE:
COLOURED MITIGATION MEASURES ARE LOCATION SPECIFIC NON-COLOURED MITIGATION MEASURES CAN BE APPLIED THROUGHOUT THE PROJECT SITE BOUNDARY.
L = LANDSCAPE MITIGATION MEASURE
V = VISUAL MITIGATION MEASURE

Rev.	Date	Description	Checked
A	02DEC15	FIRST ISSUE	AD
B	06FEB17	SECOND ISSUE	AD



<p>HONG KONG INTERNATIONAL AIRPORT</p>	<p>MOTT MACDONALD</p>	<p>Title</p> <p>LANDSCAPE AND VISUAL MITIGATION ARRANGEMENT PLAN – CHEK LAP KOK</p>	<p>Consultant's Signatures for Approval</p> <table border="1"> <tr> <td>Design</td> <td>PL</td> <td>06FEB17</td> </tr> <tr> <td>Checkers</td> <td>TL / TK</td> <td>06FEB17</td> </tr> <tr> <td>Approver</td> <td>AD</td> <td>06FEB17</td> </tr> </table>	Design	PL	06FEB17	Checkers	TL / TK	06FEB17	Approver	AD	06FEB17	<p>EXPANSION OF HONG KONG INTERNATIONAL AIRPORT INTO A THREE-RUNWAY SYSTEM</p> <p>Drawing No. MCL / P132 / EMA / 12-001.1</p> <p>Scale at A3: 25000</p> <p>Rev. B</p>
Design	PL	06FEB17											
Checkers	TL / TK	06FEB17											
Approver	AD	06FEB17											

CM1
CM2
CM3
CM4
CM5
CM6
CM7
OM5

CM1
CM2
CM3
CM4
CM5
CM6
CM7
OM5

CM1
CM2
CM3
CM4
CM7

CM1
CM2
CM3
CM4
CM8
CM9
OM7

CM1
CM2
CM3
CM4

CM1
CM2
CM3
CM4
CM5
CM7
CM8
CM9
OM7
OM11

CM1
CM2
CM3
CM4
CM5
CM6
CM7
OM5

CM1
CM2
CM3
CM4
CM5
CM8
CM9
OM7

- POTENTIAL MITIGATION MEASURES**
CONSTRUCTION PHASE:
 CM1 (L+V) – WORKS AREA MINIMISED
 CM2 (V) – CONSTRUCTION PERIOD REDUCED TO PRACTICAL MINIMUM
 CM3 (V) – PHASING OF THE CONSTRUCTION STAGE
 CM4 (V) – CONSTRUCTION TRAFFIC (LAND AND SEA) REDUCED TO PRACTICAL MINIMUM
 CM5 (V) – ERECTION OF DECORATIVE MESH SCREENS OR CONSTRUCTION HOARDINGS
 CM6 (V) – AVOIDANCE OF EXCESSIVE HEIGHT AND BULK OF SITE BUILDINGS AND STRUCTURES
 CM7 (V) – CONTROL OF NIGHT-TIME LIGHTING
 CM8 (L) – PROTECT EXISTING TREES
 CM9 (L) – TREES AFFECTED BY THE WORKS SHALL BE TRANSPLANTED
 CM10 (L+V) – ADVANCED HYDROSEEDING AROUND TAXIWAYS AND RUNWAYS

- POTENTIAL MITIGATION MEASURES**
OPERATIONAL PHASE:
 OM1 (V) – SENSITIVE LANDSCAPE DESIGN OF RECLAMATION EDGE
 OM2 (V) – ALL ABOVE GROUND STRUCTURES SHALL BE SENSITIVELY DESIGNED
 OM3 (V) – SENSITIVE DESIGN OF BUILDINGS AND STRUCTURES IN TERMS OF SCALE, HEIGHT AND BULK (VISUAL WEIGHT)
 OM4 (V) – USE APPROPRIATE BUILDING MATERIALS AND COLOURS IN BUILT STRUCTURES
 OM5 (V) – LIGHTING UNITS TO BE DIRECTIONAL AND MINIMISE UNNECESSARY LIGHT SPILL AND GLARE
 OM6 (L+V) – GREENING MEASURES IMPLEMENTED
 OM7 (L+V) – COMPENSATORY TREE PLANTING FOR ALL FELLED TREES
 OM8 (L+V) – STREETSCAPE SHALL BE SENSITIVELY DESIGNED
 OM9 (L+V) – ALL STREETSCAPE AREAS AND HARD AND SOFT LANDSCAPE AREAS DISTURBED DURING CONSTRUCTION SHALL BE REINSTATED
 OM10 (V) – AESTHETIC IMPROVEMENT PLANTING OF VIADUCT STRUCTURE THROUGH GREENING OF STRUCTURE WHERE FEASIBLE
 OM11 (V) – SENSITIVE DESIGN OF FOOTBRIDGES, NOISE BARRIERS AND ENCLOSURES WITH GREENING (SCREEN PLANTING/CLIMBERS/PLANTERS) AND CHROMATIC MEASURES

LEGEND:

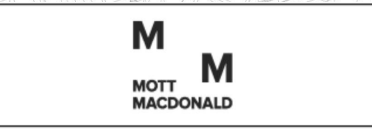
- CM10, OM6
- OM2, OM3, OM4, OM6
- OM6, OM8, OM9
- OM6, OM10
- OM1, OM6



NOTE:
 COLOURED MITIGATION MEASURES ARE LOCATION SPECIFIC NON-COLOURED MITIGATION MEASURES CAN BE APPLIED THROUGHOUT THE PROJECT SITE BOUNDARY
 L = LANDSCAPE MITIGATION MEASURE
 V = VISUAL MITIGATION MEASURE

Copyright in this document and all proprietary rights in the information it contains belong to the AA. It is a condition of the supply of this document, in whatever form, that the recipient shall hold it in confidence and shall not duplicate or otherwise reproduce it in whole or in part, nor disclose its contents without the written consent of the AA.

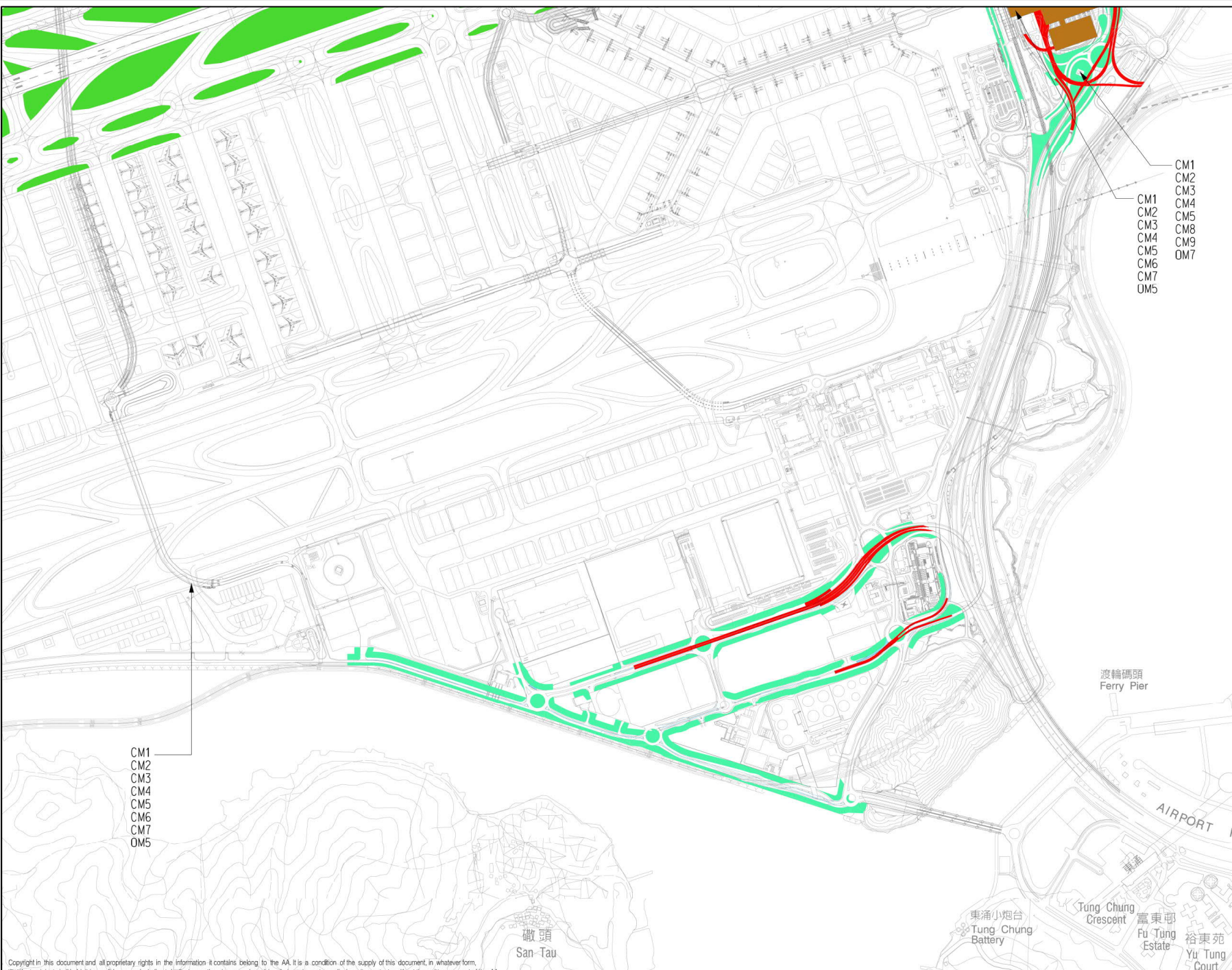
Rev.	Date	Description	Checked
A	02DEC15	FIRST ISSUE	AD
B	06FEB17	SECOND ISSUE	AD



Title
LANDSCAPE AND VISUAL MITIGATION ARRANGEMENT BLOW-UP PLAN – CHEK LAP KOK

Consultant's Signatures for Approval		Date
Design	PL	06FEB17
Checkers	TL / TK	06FEB17
Approver	AD	06FEB17

EXPANSION OF HONG KONG INTERNATIONAL AIRPORT INTO A THREE-RUNWAY SYSTEM	
Drawing No.	MCL / P132 / EMA / 12-001.2
Scale at A3	12500
Rev.	B



- POTENTIAL MITIGATION MEASURES**
CONSTRUCTION PHASE:
 CM1 (L+V) - WORKS AREA MINIMISED
 CM2 (V) - CONSTRUCTION PERIOD REDUCED TO PRACTICAL MINIMUM
 CM3 (V) - PHASING OF THE CONSTRUCTION STAGE
 CM4 (V) - CONSTRUCTION TRAFFIC (LAND AND SEA) REDUCED TO PRACTICAL MINIMUM
 CM5 (V) - ERECTION OF DECORATIVE MESH SCREENS OR CONSTRUCTION HOARDINGS
 CM6 (V) - AVOIDANCE OF EXCESSIVE HEIGHT AND BULK OF SITE BUILDINGS AND STRUCTURES
 CM7 (V) - CONTROL OF NIGHT-TIME LIGHTING
 CM8 (L) - PROTECT EXISTING TREES
 CM9 (L) - TREES AFFECTED BY THE WORKS SHALL BE REPLANTED
 CM10 (L+V) - ADVANCED HYDROSEEDING AROUND TAXIWAYS AND RUNWAYS

- POTENTIAL MITIGATION MEASURES**
OPERATIONAL PHASE:
 OM1 (V) - SENSITIVE LANDSCAPE DESIGN OF RECLAMATION EDGE
 OM2 (V) - ALL ABOVE GROUND STRUCTURES SHALL BE SENSITIVELY DESIGNED
 OM3 (V) - SENSITIVE DESIGN OF BUILDINGS AND STRUCTURES IN TERMS OF SCALE, HEIGHT AND BULK (VISUAL WEIGHT)
 OM4 (V) - USE APPROPRIATE BUILDING MATERIALS AND COLOURS IN BUILT STRUCTURES
 OM5 (V) - LIGHTING UNITS TO BE DIRECTIONAL AND MINIMISE UNNECESSARY LIGHT SPILL AND GLARE
 OM6 (L+V) - GREENING MEASURES IMPLEMENTED
 OM7 (L+V) - COMPENSATORY TREE PLANTING FOR ALL FELLED TREES
 OM8 (L+V) - STREETSCAPE SHALL BE SENSITIVELY DESIGNED
 OM9 (L+V) - ALL STREETSCAPE AREAS AND HARD AND SOFT LANDSCAPE AREAS DISTURBED DURING CONSTRUCTION SHALL BE REINSTATED
 OM10 (V) - AESTHETIC IMPROVEMENT PLANTING OF VIADUCT STRUCTURE THROUGH GREENING OF STRUCTURE WHERE FEASIBLE
 OM11 (V) - SENSITIVE DESIGN OF FOOTBRIDGES, NOISE BARRIERS AND ENCLOSURES WITH GREENING (SCREEN PLANTING/CULMBERS/PLANTERS) AND CHROMATIC MEASURES

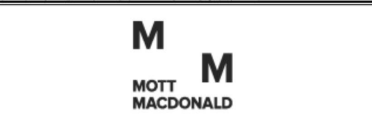
LEGEND:

	CM10, OM6
	OM2, OM3, OM4, OM6
	OM6, OM8, OM9
	OM6, OM10
	OM1, OM6

- CM1
 CM2
 CM3
 CM4
 CM5
 CM6
 CM7
 OM5

Copyright in this document and all proprietary rights in the information it contains belong to the AA. It is a condition of the supply of this document, in whatever form, that the recipient shall hold it in confidence and shall not duplicate or otherwise reproduce it in whole or in part, nor disclose its contents without the written consent of the AA.

Rev.	Date	Description	Checked
A	02DEC15	FIRST ISSUE	AD
B	06FEB17	SECOND ISSUE	AD



Title
LANDSCAPE AND VISUAL MITIGATION ARRANGEMENT BLOW-UP PLAN – CHEK LAP KOK

Consultant's Signatures for Approval		Date
Design	PL	06FEB17
Checkers	TL / TK	06FEB17
Approver	AD	06FEB17

NOTE:
 COLOURED MITIGATION MEASURES ARE LOCATION SPECIFIC NON-COLOURED MITIGATION MEASURES CAN BE APPLIED THROUGHOUT THE PROJECT SITE BOUNDARY
 L = LANDSCAPE MITIGATION MEASURE
 V = VISUAL MITIGATION MEASURE

EXPANSION OF HONG KONG INTERNATIONAL AIRPORT INTO A THREE-RUNWAY SYSTEM		Scale at A3
Drawing No.	MCL / P132 / EMA / 12-001.3	12500
		Rev. B



CM1
CM2
CM3
CM4
CM5
CM6
CM7
OM5

CM1
CM2
CM3
CM4
CM5
CM7
OM5

CM1
CM2
CM3
CM4
CM6
CM7

CM1
CM2
CM3
CM4
CM5
CM6
CM7
OM5

POTENTIAL MITIGATION MEASURES
CONSTRUCTION PHASE:
 CM1 (L+V) - WORKS AREA MINIMISED
 CM2 (V) - CONSTRUCTION PERIOD REDUCED TO PRACTICAL MINIMUM
 CM3 (V) - PHASING OF THE CONSTRUCTION STAGE
 CM4 (V) - CONSTRUCTION TRAFFIC (LAND AND SEA) REDUCED TO PRACTICAL MINIMUM
 CM5 (V) - ERECTION OF DECORATIVE MESH SCREENS OR CONSTRUCTION HOARDINGS
 CM6 (V) - AVOIDANCE OF EXCESSIVE HEIGHT AND BULK OF SITE BUILDINGS AND STRUCTURES
 CM7 (V) - CONTROL OF NIGHT-TIME LIGHTING
 CM8 (L) - PROTECT EXISTING TREES
 CM9 (L) - TREES AFFECTED BY THE WORKS SHALL BE TRANSPLANTED
 CM10 (L+V) - ADVANCED HYDROSEEDING AROUND TAXIWAYS AND RUNWAYS

POTENTIAL MITIGATION MEASURES
OPERATIONAL PHASE:
 OM1 (V) - SENSITIVE LANDSCAPE DESIGN OF RECLAMATION EDGE
 OM2 (V) - ALL ABOVE GROUND STRUCTURES SHALL BE SENSITIVELY DESIGNED
 OM3 (V) - SENSITIVE DESIGN OF BUILDINGS AND STRUCTURES IN TERMS OF SCALE, HEIGHT AND BULK (VISUAL WEIGHT)
 OM4 (V) - USE APPROPRIATE BUILDING MATERIALS AND COLOURS IN BUILT STRUCTURES
 OM5 (V) - LIGHTING UNITS TO BE DIRECTIONAL AND MINIMISE UNNECESSARY LIGHT SPILL AND GLARE
 OM6 (L+V) - GREENING MEASURES IMPLEMENTED
 OM7 (L+V) - COMPENSATORY TREE PLANTING FOR ALL FELLED TREES
 OM8 (L+V) - STREETSCAPE SHALL BE SENSITIVELY DESIGNED
 OM9 (L+V) - ALL STREETSCAPE AREAS AND HARD AND SOFT LANDSCAPE AREAS DISTURBED DURING CONSTRUCTION SHALL BE REINSTATED
 OM10 (V) - AESTHETIC IMPROVEMENT PLANTING OF VIADUCT STRUCTURE THROUGH GREENING OF STRUCTURE WHERE FEASIBLE
 OM11 (V) - SENSITIVE DESIGN OF FOOTBRIDGES, NOISE BARRIERS AND ENCLOSURES WITH GREENING (SCREEN PLANTING/CLIMBERS/PLANTERS) AND CHROMATIC MEASURES

LEGEND:

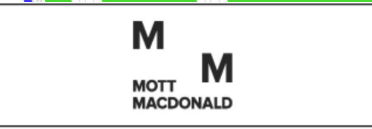
- CM10, OM6
- OM2, OM3, OM4, OM6
- OM6, OM8, OM9
- OM6, OM10
- OM1, OM6



NOTE:
 COLOURED MITIGATION MEASURES ARE LOCATION SPECIFIC NON-COLOURED MITIGATION MEASURES CAN BE APPLIED THROUGHOUT THE PROJECT SITE BOUNDARY
 L = LANDSCAPE MITIGATION MEASURE
 V = VISUAL MITIGATION MEASURE

Copyright in this document and all proprietary rights in the information it contains belong to the AA. It is a condition of the supply of this document, in whatever form, that the recipient shall hold it in confidence and shall not duplicate or otherwise reproduce it in whole or in part, nor disclose its contents without the written consent of the AA.

Rev.	Date	Description	Checked
A	02DEC15	FIRST ISSUE	AD
B	06FEB17	SECOND ISSUE	AD



Title
LANDSCAPE AND VISUAL MITIGATION ARRANGEMENT BLOW-UP PLAN – CHEK LAP KOK

Consultant's Signatures for Approval		Date
Design	PL	06FEB17
Checkers	TL / TK	06FEB17
Approver	AD	06FEB17

EXPANSION OF HONG KONG INTERNATIONAL AIRPORT INTO A THREE-RUNWAY SYSTEM	
Drawing No.	MCL / P132 / EMA / 12-001.4
Scale at A3	12500
Rev.	B

POTENTIAL MITIGATION MEASURES
CONSTRUCTION PHASE:

- CM1 (L+V) - WORKS AREA MINIMISED
- CM2 (V) - CONSTRUCTION PERIOD REDUCED TO PRACTICAL MINIMUM
- CM3 (V) - PHASING OF THE CONSTRUCTION STAGE
- CM4 (V) - CONSTRUCTION TRAFFIC (LAND AND SEA) REDUCED TO PRACTICAL MINIMUM
- CM5 (V) - ERECTION OF DECORATIVE MESH SCREENS OR CONSTRUCTION HOARDINGS
- CM6 (V) - AVOIDANCE OF EXCESSIVE HEIGHT AND BULK OF SITE BUILDINGS AND STRUCTURES
- CM7 (V) - CONTROL OF NIGHT-TIME LIGHTING
- CM8 (L) - PROTECT EXISTING TREES
- CM9 (L) - TREES AFFECTED BY THE WORKS SHALL BE TRANSPLANTED
- CM10 (L+V) - ADVANCED HYDROSEEDING AROUND TAXIWAYS AND RUNWAYS

POTENTIAL MITIGATION MEASURES
OPERATIONAL PHASE:

- OM1 (V) - SENSITIVE LANDSCAPE DESIGN OF RECLAMATION EDGE
- OM2 (V) - ALL ABOVE GROUND STRUCTURES SHALL BE SENSITIVELY DESIGNED
- OM3 (V) - SENSITIVE DESIGN OF BUILDINGS AND STRUCTURES IN TERMS OF SCALE, HEIGHT AND BULK (VISUAL WEIGHT)
- OM4 (V) - USE APPROPRIATE BUILDING MATERIALS AND COLOURS IN BUILT STRUCTURES
- OM5 (V) - LIGHTING UNITS TO BE DIRECTIONAL AND MINIMISE UNNECESSARY LIGHT SPILL AND GLARE
- OM6 (L+V) - GREENING MEASURES IMPLEMENTED
- OM7 (L+V) - COMPENSATORY TREE PLANTING FOR ALL FELLED TREES
- OM8 (L+V) - STREETSCAPE SHALL BE SENSITIVELY DESIGNED
- OM9 (L+V) - ALL STREETSCAPE AREAS AND HARD AND SOFT LANDSCAPE AREAS DISTURBED DURING CONSTRUCTION SHALL BE REINSTATED
- OM10 (V) - AESTHETIC IMPROVEMENT PLANTING OF VIADUCT STRUCTURE THROUGH GREENING OF STRUCTURE WHERE FEASIBLE
- OM11 (V) - SENSITIVE DESIGN OF FOOTBRIDGES, NOISE BARRIERS AND ENCLOSURES WITH GREENING (SCREEN PLANTING/CLIMBERS/PLANTERS) AND CHROMATIC MEASURES

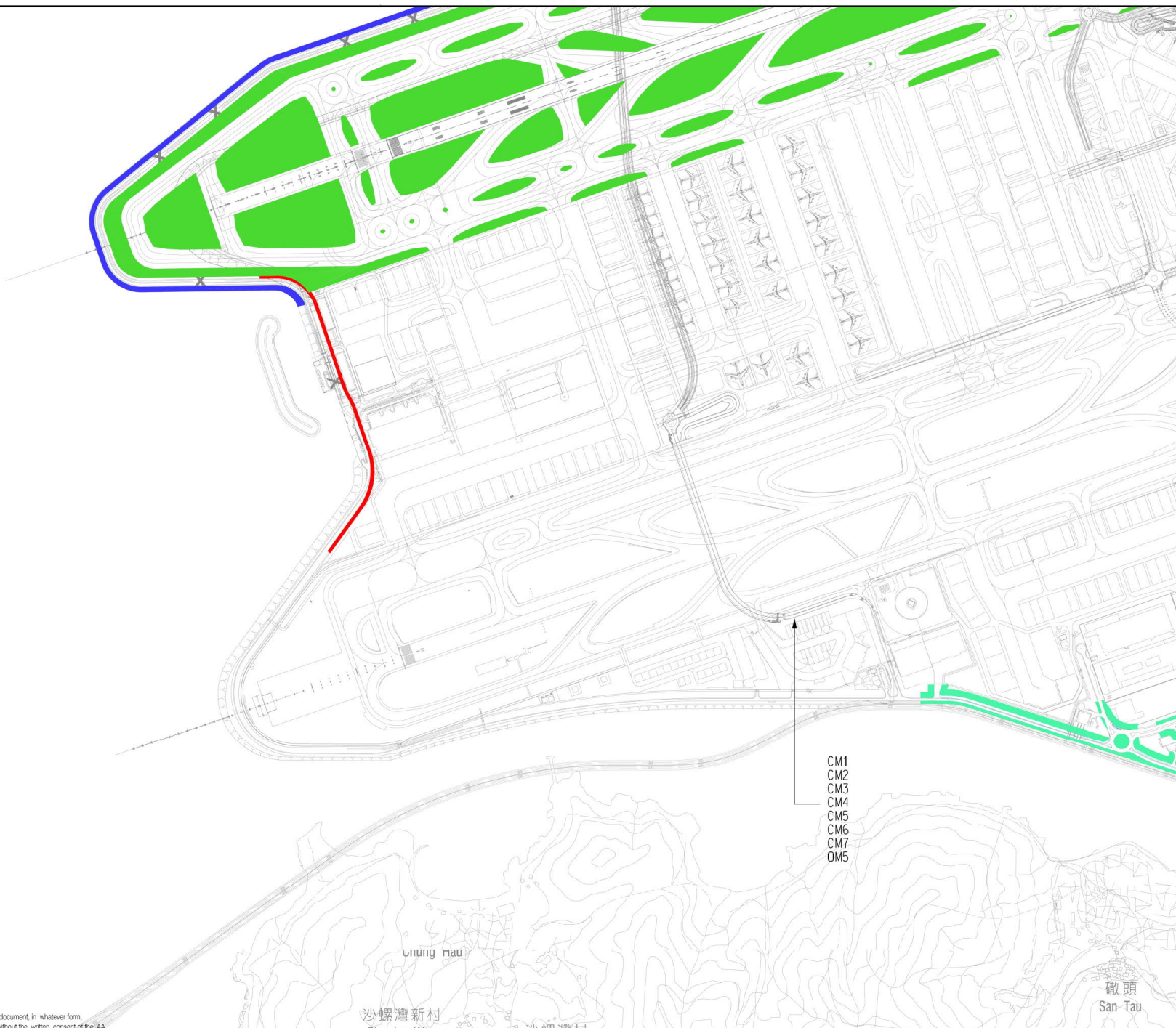
LEGEND:

- CM10, OM6
- OM2, OM3, OM4, OM6
- OM6, OM8, OM9
- OM6, OM10
- OM1, OM6



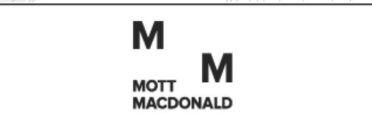
NOTE:
COLOURED MITIGATION MEASURES ARE LOCATION SPECIFIC NON-COLOURED MITIGATION MEASURES CAN BE APPLIED THROUGHOUT THE PROJECT SITE BOUNDARY
L = LANDSCAPE MITIGATION MEASURE
V = VISUAL MITIGATION MEASURE

Copyright in this document and all proprietary rights in the information it contains belong to the AA. It is a condition of the supply of this document, in whatever form, that the recipient shall hold it in confidence and shall not duplicate or otherwise reproduce it in whole or in part, nor disclose its contents without the written consent of the AA.



CM1
CM2
CM3
CM4
CM5
CM6
CM7
OM5

Rev.	Date	Description	Checked
A	02DEC15	FIRST ISSUE	AD
B	06FEB17	SECOND ISSUE	AD



Title
LANDSCAPE AND VISUAL MITIGATION ARRANGEMENT BLOW-UP PLAN – CHEK LAP KOK

Consultant's Signatures for Approval		Date
Design	PL	06FEB17
Checkers	TL / TK	06FEB17
Approver	AD	06FEB17

EXPANSION OF HONG KONG INTERNATIONAL AIRPORT INTO A THREE-RUNWAY SYSTEM	
Drawing No.	MCL / P132 / EMA / 12-001.5
Scale at A3	12500
Rev.	B

POTENTIAL MITIGATION MEASURES
CONSTRUCTION PHASE:

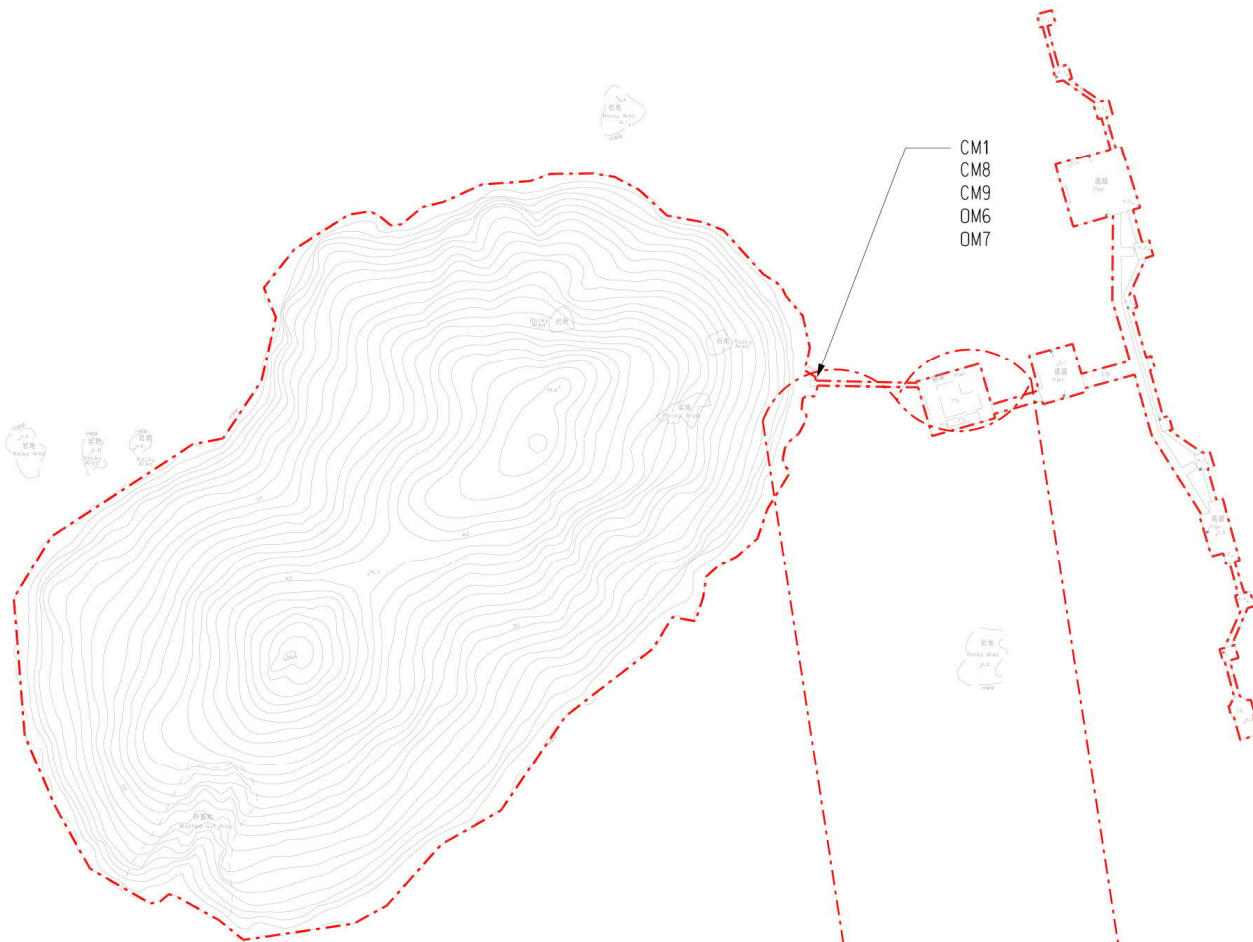
- CM1 (L+V) - WORKS AREA MINIMISED
- CM2 (V) - CONSTRUCTION PERIOD REDUCED TO PRACTICAL MINIMUM
- CM3 (V) - PHASING OF THE CONSTRUCTION STAGE
- CM4 (V) - CONSTRUCTION TRAFFIC (LAND AND SEA) REDUCED TO PRACTICAL MINIMUM
- CM5 (V) - ERECTION OF DECORATIVE MESH SCREENS OR CONSTRUCTION HOARDINGS
- CM6 (V) - AVOIDANCE OF EXCESSIVE HEIGHT AND BULK OF SITE BUILDINGS AND STRUCTURES
- CM7 (V) - CONTROL OF NIGHT-TIME LIGHTING
- CM8 (L) - PROTECT EXISTING TREES
- CM9 (L) - TREES AFFECTED BY THE WORKS SHALL BE TRANSPLANTED
- CM10 (L+V) - ADVANCED HYDROSEEDING AROUND TAXIWAYS AND RUNWAYS

POTENTIAL MITIGATION MEASURES
OPERATIONAL PHASE:

- OM1 (V) - SENSITIVE LANDSCAPE DESIGN OF RECLAMATION EDGE
- OM2 (V) - ALL ABOVE GROUND STRUCTURES SHALL BE SENSITIVELY DESIGNED
- OM3 (V) - SENSITIVE DESIGN OF BUILDINGS AND STRUCTURES IN TERMS OF SCALE, HEIGHT AND BULK (VISUAL WEIGHT)
- OM4 (V) - USE APPROPRIATE BUILDING MATERIALS AND COLOURS IN BUILT STRUCTURES
- OM5 (V) - LIGHTING UNITS TO BE DIRECTIONAL AND MINIMISE UNNECESSARY LIGHT SPILL AND GLARE
- OM6 (L+V) - GREENING MEASURES IMPLEMENTED
- OM7 (L+V) - COMPENSATORY TREE PLANTING FOR ALL FELLED TREES
- OM8 (L+V) - STREETScape SHALL BE SENSITIVELY DESIGNED
- OM9 (L+V) - ALL STREETScape AREAS AND HARD AND SOFT LANDSCAPE AREAS DISTURBED DURING CONSTRUCTION SHALL BE REINSTATED
- OM10 (V) - AESTHETIC IMPROVEMENT PLANTING OF VIADUCT STRUCTURE THROUGH GREENING OF STRUCTURE WHERE FEASIBLE
- OM11 (V) - SENSITIVE DESIGN OF FOOTBRIDGES, NOISE BARRIERS AND ENCLOSURES WITH GREENING (SCREEN PLANTING/CLIMBERS/PLANTERS) AND CHROMATIC MEASURES

--- PROJECT SITE BOUNDARY

NOTE:
COLOURED MITIGATION MEASURES ARE LOCATION SPECIFIC
NON-COLOURED MITIGATION MEASURES CAN BE APPLIED THROUGHOUT THE PROJECT SITE BOUNDARY
L = LANDSCAPE MITIGATION MEASURE
V = VISUAL MITIGATION MEASURE



Copyright in this document and all proprietary rights in the information it contains belong to the AA. It is a condition of the supply of this document, in whatever form, that the recipient shall hold it in confidence and shall not duplicate or otherwise reproduce it in whole or in part, nor disclose its contents without the written consent of the AA.

Rev.	Date	Description	Checked
A	02DEC15	FIRST ISSUE	AD
B	06FEB17	SECOND ISSUE	AD



Title
LANDSCAPE AND VISUAL MITIGATION ARRANGEMENT PLAN – SHA CHAU

Consultant's Signatures for Approval		Date
Design	PL	06FEB17
Checkers	TL / TK	06FEB17
Approver	AD	06FEB17

EXPANSION OF HONG KONG INTERNATIONAL AIRPORT INTO A THREE-RUNWAY SYSTEM	
Drawing No.	MCL / P132 / EMA / 12-001.6
Scale at A3	2000
Rev.	B